

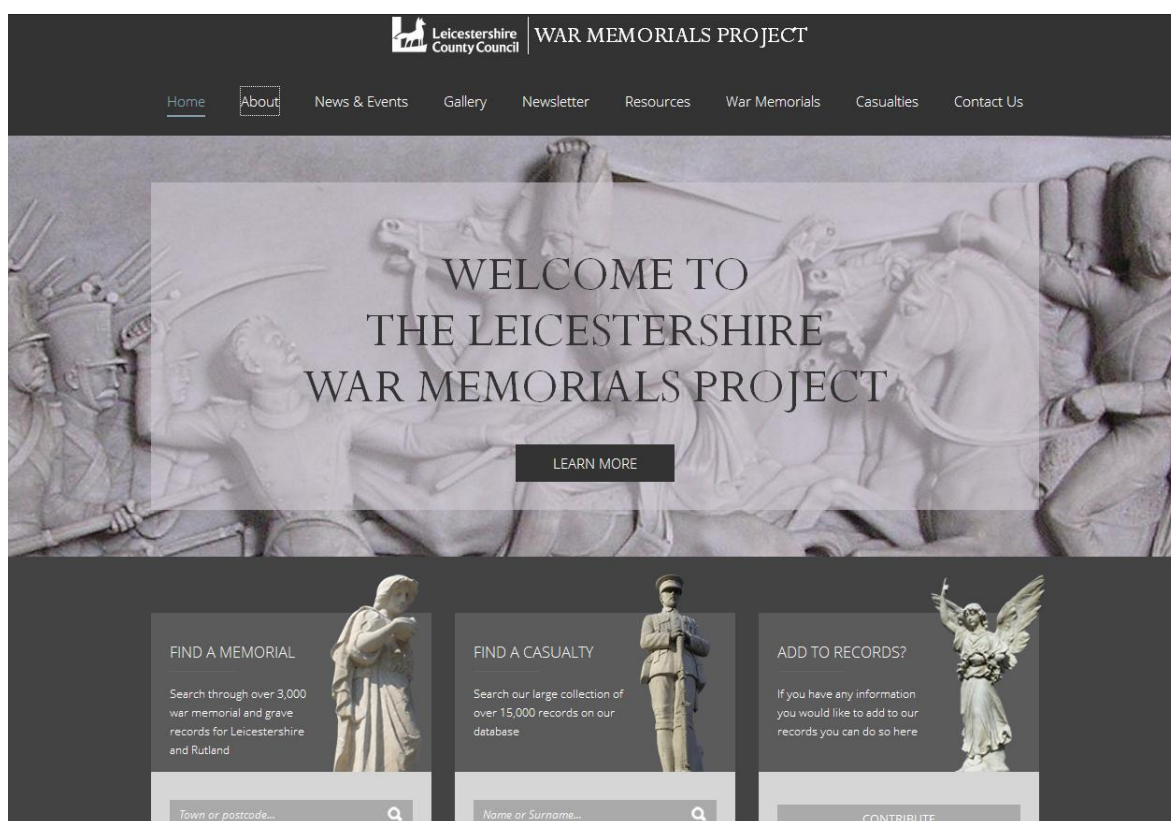
# Leicestershire & Rutland War Memorials Project

NEWSLETTER ISSUE 18

July 2014

Special Update:

**New-look website now online!**



[www.leicestershiREWarmemorials.co.uk/home/](http://www.leicestershiREWarmemorials.co.uk/home/)

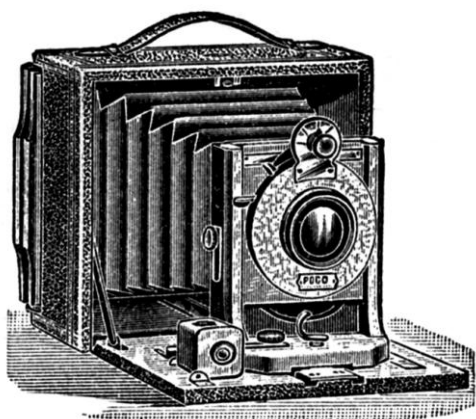
Although our web redevelopment work is on-going, the first major phase is here: our data is now back online. Over the coming months our web development friends, CyberMedia, will be adding new features and more functionality.

For now we'd like to hear your views on the new look. We know we have a lot more work to do, but your feedback at this early stage is welcome. Please send any thoughts or comments to [warmemorials@leics.gov.uk](mailto:warmemorials@leics.gov.uk)

## News



### Leicestershire County Council appeals for photographs of WW1 Centenary events!



Please see the poster enclosed at the end of this newsletter. Please send photographs of Centenary events to [remembrance100@leics.gov.uk](mailto:remembrance100@leics.gov.uk) (1Mb max. per image), include a photographers' name if you would like it to be credited, along with the event date and title.

\* \* \*

### WW1 Reference Group gets web presence with Go Leicestershire!



From today a new website is available where you will find details of events across the city and county, more information about the work of the Reference Group and its membership, and more about our initiatives and projects currently underway.

You can also add your own WW1 events and subscribe to this (free) newsletter.

Please visit [www.thegreatwar-leicestershire.co.uk](http://www.thegreatwar-leicestershire.co.uk)

\* \* \*

## The First World War in Leicestershire: A Century of Stories



In February 2014, the County Council accepted a grant from the Heritage Lottery Fund to support a four year First World War commemoration project called *A Century of Stories*, which explores the social history surrounding the individual and shared legacy of the First World War.

A funding award £318,000 was granted by the HLF with the remainder of the £427,000 coming from the County Council and contributions from the British Legion and the Friends of Leicester and Leicestershire Museums.

### *A Century of Stories* has two main strands:

- History Cafés and Taster Sessions to help identify locally relevant topics; from family genealogy to exploring how a village was involved in the conflict, to how leisure or sport was maintained during wartime. 50 of these stories will be printed on banners and placed in pop-up exhibitions and displays in community venues across the county.
- Commissioned research projects selected by a panel of local and national experts who will identify areas of lack in existing published research into Leicestershire's contribution to, and experience of, the conflict and its immediate aftermath.

The outcomes will be the basis of a final exhibition- a commemorative centenary conference and learning weekend in November 2018, which will bring together all of the participants and the findings of their research throughout the four years of the project.

*A Century of Stories* will go live after an official media launch on 12<sup>th</sup> August 2014.

\* \* \*

## Heritage Lottery Fund awards £8,700 to Hoby for First World War commemorations

The village of Hoby situated between Leicester and Melton Mowbray has been awarded a grant of £8,700 from the Heritage Lottery Fund to commemorate the 100<sup>th</sup> anniversary of the outbreak of the First World War. Together with grants from Hoby with Rotherby Parish Council, Hoby Recreation Trust, Hoby Sunday School Trust and Hoby Church, this brings the total for the project to £10,200. This small Leicestershire village, which had 175 residents in 1914, sent 67 men off to war, eleven of whom lost their lives in the conflict.

Hoby will be producing a commemorative book, available in digital form as a website and an app and will be promoted on social media. Villagers will mount an exhibition in the Church including a 1914 kitchen and there will be a drama production enacting scenes from the time in the village hall. In addition, there will be a village trail.

There will be a muffled peal of bells sounded from All Saints Church Hoby on the 100<sup>th</sup> anniversary of the death of each person who died in action, beginning on 15<sup>th</sup> May 2015.



Local primary schools will be invited to create artwork to commemorate the anniversary and a roll of honour will be produced naming those who fought. The village will remember them particularly on the 2<sup>nd</sup>, 3<sup>rd</sup> and 4<sup>th</sup> August 2014 when there will be a flower festival and on the 4<sup>th</sup> a service in Hoby church.

Should anyone have any information regarding anything pertinent to Hoby or its people during the First World War, please email Diane Horsfield [hdlhs@horsfste.plus.com](mailto:hdlhs@horsfste.plus.com) Links to the special commemoration website will be found at <http://www.leicestershirevillages.com/hoby/>

For further information please contact:

Nicky Stephen Marketing Ltd

Tel: 01664 434188

Email: [nicky@nickystephenmarketing.co.uk](mailto:nicky@nickystephenmarketing.co.uk)

\* \* \*

## Oadby Baptist Church WW1 Memorial Website



Founding member of the WFA Leicestershire and Rutland Branch, Nigel Atter, has been busy researching the members of his local church who paid the ultimate sacrifice by offering up their lives for freedom. Following extensive research Nigel has produced, in association with Oadby Baptist Church, an online memorial. Each man has a vignette of his army service, where known.

Please visit <http://tinyurl.com/p64lace>

to access the resource. Please leave a comment on the site if you would like to.

\* \* \*

## Events

### Hinckley and District Museum

April to 31st October 2014 - "Somewhere in No Man's Land" - a major new exhibition chronicling the impact of the Great War on the people and institutions of Hinckley and District. Visitors enter the exhibition by "going over the top" into No Man's Land to the sound of gunfire. Dubbed the "People's Exhibition", most of the artifacts have been loaned to the Museum from local families. Rare recordings of Hinckley veterans recalling their wartime experiences augment the other exhibits.

Opening times: Saturdays and Bank Holidays 10am to 4pm Sundays 2.00pm to 5pm

Admission: Adults 50p Children and concessions 25p

Hinckley and District Museum, Framework Knitters Cottages, 18 Lower Bond Street, Hinckley, Leics. LE10 1QU Tel: 01455 251218



## **Hinckley, Earl Shilton, Burbage - Nobody Told Us**

One of Hinckley's leading local historians, Greg Drozd MA, examines the impact of the Great War on Hinckley and District. Beginning with his Uncles on the Hinckley War Memorial, Greg takes the audience through a journey of discovery and realisation of how every aspect of life was affected by the war. Greg uses his 25 years of research material to paint a vivid picture of life in Hinckley and District during the war.

June 11th - at Earl Shilton History group - Earl Shilton Methodist Church, The Hollow, Earl Shilton

June 20th - 2.30pm - Earl Shilton United Reformed Church

7.00pm - Hinckley Great Meeting Chapel

September 4th - Burbage Local History Group - Burbage Congregational Church - 7.30pm

November 20th - 7.30pm - Cafe Impressions, Atkins Building, Lower Bond Street, Hinckley, Leics.

Admission: £3

"Where is Uncle Jack sleeping tonight?".....Greg Drozd reveals his personal search in Flanders fields for his Uncle Jack and comes up with a twist in the tale.

## **August 3rd - Sunday - 2.30pm - Drumhead Service - Hinckley Cemetery**

Organised by the Hinckley and Burbage branch of the Royal British Legion, this service of commemoration and gratitude, will take place by the graveside of the only Hinckley soldier to be buried in pauper's ground.

The highlight of the service will be a simultaneous laying of wreaths on the 27 war graves in the cemetery as well as the 34 family gravestones that mention First World War casualties. The ceremony will be attended by numerous standard bearers and a contingent of Gurkhas from Gamecock Barracks.

\* \* \*

## Leicester City, County & Rutland “At Risk” War Memorials Project

The “At Risk” project is working to ensure the protection of “orphaned” war memorials, which are declining in their role as a focal point for their community and in some cases have been ejected from their original locations/ This project demonstrates the support for the local service people and – particularly poignantly at this time – fulfils the community’s promise to our dead.



Open Days (Chancel, (rear of) All Saint’s Church, Highcross Street, Leicester LE1 4PH)

Thursday, 11<sup>th</sup> September – 10am – 4pm

Friday, 12<sup>th</sup> September – ditto

Saturday, 13<sup>th</sup> September – ditto

Saturday, 15<sup>th</sup> November – ditto

For further information see <http://leicester-rutlandatriskwarmemorials.btck.co.uk/>

\* \* \*

## Conservation Update

### Restoration projects for WW1 Centenary

Many custodians are having their war memorials restored in time for the beginning of the WW1 Centenary period. If you know of any projects going ahead that we are not aware of, we would love to be notified.

Please note that many of the contractors with the necessary experience to work on historic monuments are very busy at this time. It may be slower than usual to obtain quotes or get works booked in. We strongly recommend not trying to rush this process.

We can also be contacted about conservation concerns at any time and would welcome the opportunity to give you free specialist advice on restoration works, specialist contractors, and funding; email [warmemorials@leics.gov.uk](mailto:warmemorials@leics.gov.uk) or contact Liz Blood on 0116 3056187.

We also recommend looking at the guidance provided by War Memorials Trust at [www.warmemorials.org](http://www.warmemorials.org).

## Current projects

Conservation advice and grants schemes are underway at Medbourne, Tilton on the Hill, Edmondthorpe and Croft.



Medbourne: This is a two-stage project, where the condition of the inscriptions was assessed after cleaning. Specialist repairs and repainting was then done to the inscriptions.



Croft war memorial, part way through the project. This is also a two-part project. Landscaping works have been carried out to the surrounding ground and planting areas (shown before and after in these photos). Soon, work on the memorial itself will begin, to include cleaning and repointing.

\* \* \*



## Memorial Spotlight

This edition's highlight is a monument at St Leonard's Church, Misterton, in Harborough district.



Misterton war memorial. Photograph: R Allen

Although this memorial is being highlighted primarily for its inscription, which I will go into below, the memorial itself has interesting features.

It is a large stone memorial with three tablets bearing inscriptions in black (names to either side, inscription in centre), with a soldier and sailor in mourning on far left and right, and a Naval shield below. There is a cross in wreath above, between the hilts of two swords separating the tablets. It was unveiled in December 1920 by General Vaughan. The Lutterworth Town Band played the National Anthem at the service. Information on this memorial came to us from A Finney, D Kenyon, R Allen, J Sharpe and the Public Monuments and Sculpture Association.

Although this memorial resembles others around the Country (including one at Rearsby within the County), it is still relatively uncommon in Leicestershire for depicting service personnel visually. Leicestershire's war memorials in general feature few sculptural elements, so these examples are worth highlighting.

The inscription on the Misterton memorial is followed by: THESE IN THE DAY WHEN HEAVEN / WAS FALLING / THE DAY WHEN EARTH'S FOUNDATIONS / FLED / OBEYED THEIR KING AND COUNTRY / CALLING / AND DID THEIR DUTY AND ARE DEAD / THEIR SHOULDERS HELD THEIR SKIES UPLIFTED / THEY STOOD AND EARTH'S FOUNDATIONS / STAY / THE CAUSE OF FREEDOM THEY DEFENDED / AND SAVED THE WORLD FOR US TODAY / DULCE ET DECORUM EST / PRO PATEN MORT / [NAMES]

This stirring piece is adapted from the poem 'Epitaph on an Army of Mercenaries' by A E Housman (1917), which was written about the British Expeditionary Force in 1914:

**'Epitaph on an Army of Mercenaries'**

These, in the day when heaven was falling,  
The hour when earth's foundations fled,  
Followed their mercenary calling  
And took their wages and are dead.

Their shoulders held the sky suspended;  
They stood, and earth's foundations stay;  
What God abandoned, these defended,  
And saved the sum of things for pay.

What is interesting about the memorial's inscription is the way that the poem has been adapted. This tells us as much about the sentiments that people wanted to convey as would an original inscription written for the purpose.

In general, anything in the poem that might have been upsetting to mourners reflecting on the war, such as the references to wages, mercenaries, or anything 'God abandoned' (which surely could not be inscribed within a church!), has been toned down, or replaced with something more uplifting or patriotic, to appeal to the mourners' feelings. The essence of the poem, however, and its echoes in this adaptation, is retained and remains apt and moving to all who read it.

\* \* \*

## **Publications:**

### **Thurmaston and the Great War, 1914-1918.**

On the 4th August 1914 Britain declared war on Germany – exactly 100 years to that day a new book will be available, called *Thurmaston and the Great War, 1914-1918*; it details the contribution of Thurmaston families to that war. The author, Mark Gamble, a member of *Thurmaston Heritage Group* and *Leicestershire & Rutland Family History Society*, has produced an illustrated book that has stories that relate to over 320 people with Thurmaston connections.

The book is the result of many years of research. It records not just those who served in the British Army, the Royal Navy, and the Royal Air Force, but also those who served in the imperial forces of the British Empire. Those included in the book are in the main those who were living in Thurmaston when they were called upon to serve their King and country. Not all those listed in the book fought in battle, some remained in home defence forces or were employed in maintaining the nation's ability to feed itself during the conflict. The details of individuals have been sympathetically recorded.

The professionally produced book will be of interest to anyone with a connection to Thurmaston, it is in A4 format, soft-bound, and has 178 pages and almost 90,000 words. Although the book has an outline of the road to war and its eventual effects, most of all, as the author states, it is intended as both a work of record and of tribute to a generation that no longer speaks for itself.

The book details can be found online on the 'Thurmaston Military Indexes' website.

The book can be had by sending a cheque, made payable to "M. GAMBLE", for £12.99, plus postage and packing, to:

Mr. M. Gamble, 9, Eastway Road, Wigston, Leicester, LE18 1NH.

Postage to add: UK £3.50, Europe £8.50, USA/Canada £13.50, Australia/New Zealand £ 14.00.



\* \* \*

## North West Leicestershire WW1 Publications Launched

Three books about casualties from North West Leicestershire have been launched. More are to follow over the coming year. The books are the result of the partnership work of North West Leicestershire Heritage Forum which is made up of representatives from independent museums and supported by the District Council.



They cover the Memorials of Ashby, Ibstock and the northern parishes around Kegworth and Castle Donington and similar stories emerge from each. Brothers, cousins and pals followed the call 'for King and Country' joining, mostly, the Leicestershire Regiment, the Leicestershire Yeomanry and the Sherwood Foresters. Those from coal mining areas were welcomed for the tunnelling companies and reported to be sent to France within days of the call coming.

Painstaking research carried out by volunteers covered visits to libraries, the Record Office and Kew. Information was also found in newspaper accounts of the times, war diaries, and village records. Local residents came forward with photographs and medals and other memorabilia.

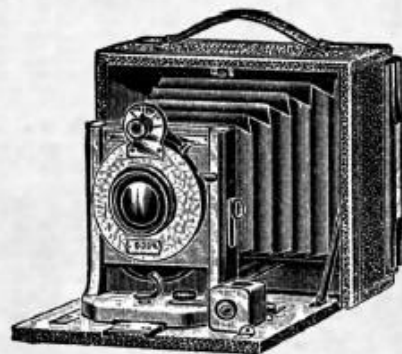
It is to those who served and died, and to the wives, parents, sisters and brothers that these books are dedicated.

The books will be available from local museums and for further information and contact details call Angela Bexton 01530 454603, email [angela.bexton@nwleicestershire.gov.uk](mailto:angela.bexton@nwleicestershire.gov.uk)

\* \* \*



HELP  
CAPTURE  
THE  
MOMENT...



LEICESTERSHIRE  
COMMÉMORATES

WORLD  
WAR  
ONE

1914 - 1918

Send 1Mb photos of Centenary events to [remembrance100@leics.gov.uk](mailto:remembrance100@leics.gov.uk)



Please include: Photographer's name, event title, date taken

Submission assigns Leicestershire County Council the right to archive and use the images to promote WW1 centenary activities. If a photographer's name is included it will be credited wherever possible.

# Bottesford Parish WW1 Centenary



## People Community & Memory

*The Bottesford Community Heritage Project has been awarded a two year Heritage Lottery Grant to mark the Centenary of the 1st World War*

**Volunteers welcome - join the project**

**Help find out what happened to the community in WW1**

**Record your family memories and memorabilia in commemorative publications**

**There will be exhibitions, concerts and community events**

If you would like to join in please contact:

David and Sue Middleton

Email [bottesfordww1centenary@gmail.com](mailto:bottesfordww1centenary@gmail.com)

Telephone 01949 842215

See our website: [www.bottesfordhistory.org.uk](http://www.bottesfordhistory.org.uk)

Follow us on Twitter: @BottesfordWW1

Find us on Facebook: BottesfordWW1Centenary





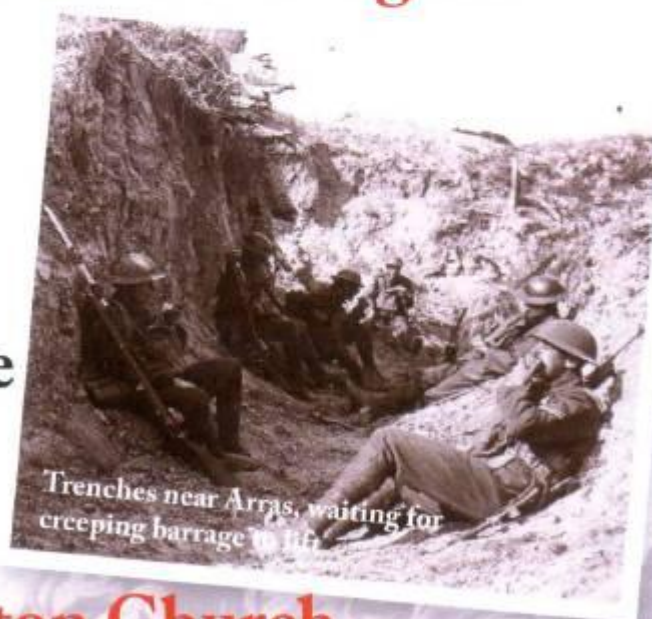
# “All over by Christmas?”

**1914 - A Century on - 2014**

**An Exhibition illustrating the  
changing mood from anticipation  
to grim reality.**

**Hallaton Church 4<sup>th</sup> August**

**Short service -  
7.00pm to mark  
the start of the  
Great War and  
to commemorate  
the bravery  
of our lads.**



**Hallaton Church**

**The Exhibition starts on 4<sup>th</sup> August  
through to 14<sup>th</sup> December 2014**

**SERVICE 7.00pm.**

**FORMAL OPENING of EXHIBITION 7.30pm**

LEICESTERSHIRE  
COMMEMORATES



## PACK UP YOUR TROUBLES



**THE LORD-LIEUTENANT OF LEICESTERSHIRE'S CONCERT TO  
COMMEMORATE THE CENTENARY OF THE FIRST WORLD WAR**

This is the story of 1914 -18, told through the music, songs, poetry, comedy and art of the time. From **Gustav Holst** to **Irving Berlin**; **Jerusalem** to **Tipperary**; **Edward Elgar** to **Marie Lloyd**.

**Performance Time:** 7.30 p.m. Thursday 2<sup>nd</sup> October 2014, at Curve, Halford Street, Leicester, LE1 1SB.

**Tickets** £15\* or £25\* for the Great British Tea Party (includes show ticket and pre-show reception with Her Majesty's Lord-Lieutenant of Leicestershire, Lady Gretton)

**Discounts:** £2.50 off ticket price for ex-service personnel.  
15% off for Curve Members

To book go to:  
[www.curveonline.co.uk](http://www.curveonline.co.uk)  
or call 0116 242 3595

**CURVE**



Thank you for your continued interest in the War Memorials Project,

Elizabeth Blood

[warmemorials@leics.gov.uk](mailto:warmemorials@leics.gov.uk) [www.leics.gov.uk/warmemorials](http://www.leics.gov.uk/warmemorials)

Room 400, Penn Lloyd Building, County Hall, Glenfield, Leicestershire, LE3 8RA.